

34200

Ball valve of carbon steel with threaded socket/
weld end DN 15 - 50

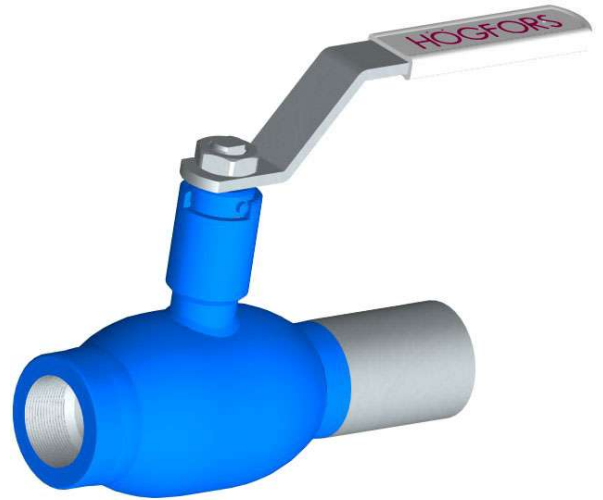
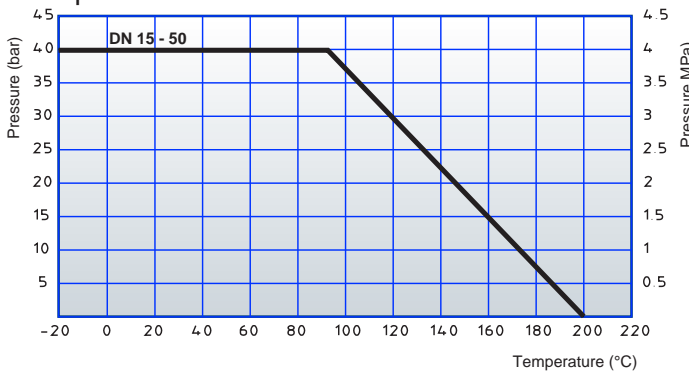
06.02.2007

Operation

Högfors welded ball valve is a tight on-off valve suitable for liquid and air pipe systems. This valve is used amongst others in district heating networks and in industry.

- Nominal pressure** PN 40 DN 15 - 50
- Tightness class** ISO 5208, EN 12266-1, RATE A
- Operating temperature** max +200°C/ min -20°C

The max pressure difference depends on the working temperature



Construction

Högfors 34200 ball valve with threaded socket/weld end and the body made of carbon steel. Floating ball and blow-out proof stem are made of stainless steel. Ball sealing is of PTFE+C. Stem has O-rings.

Conform with the requirements of the Council Directive 97/23/EC on Pressure Equipment, marking:
Class: Gas, group 2



Nominal dimensions: DN 15 - 50

Product codes:

Unpainted weld end

34200TR__N9E

Materials

- Body: EN 10216-2 P235GH, DIN 17175 ST35.8
- Ball: DIN 17457 1.4301
- Stem: EN 10088-3 1.4305
- Seal: PTFE+C
- Stem seals: FPM, EPDM

34200

Ball valve of carbon steel with threaded socket/
weld end DN 15 - 50

06.02.2007

Dimensions

DN	R	PN	Kv ₁₀₀	d	D	s	L	L1	H	h	l	Weight kg
15	G 1/2	40	8	10	21,3	2,0	157	42	91	30	110	0,5
20	G 3/4	40	13	15	26,9	2,3	167	52	95	30	110	0,7
25	G 1	40	25	20	33,7	2,6	170	55	115	36	140	1,0
32	G 1 1/4	40	41	24	42,4	2,6	195	65	119	36	140	1,4
40	G 1 1/2	40	65	31	48,3	2,9	200	70	145	47	180	2,1
50	G 2	40	100	39	60,3	2,9	235	85	151	47	180	3,0

